

# SECURITON Aspirating Smoke Detection Technical Catalogue

Version 2.0 2019



**Aspirating Smoke Detector** (including SSD 31)

**SEC-ASD-531** 1 Sampling pipe / Detector

The SecuriRAS SEC-ASD-531 aspirating smoke detector is designed for smaller monitoring areas and for the easiest possible handling.

The SEC-ASD-531 is equipped with a highly sensitive smoke sensor SSD 31 using a single sampling pipe network. The housing provides the option for two expansion modules. Commissioning and configuration is done directly on the device without any software tool. For planning the ASD PipeFlow software allows an optimized design of any installation.

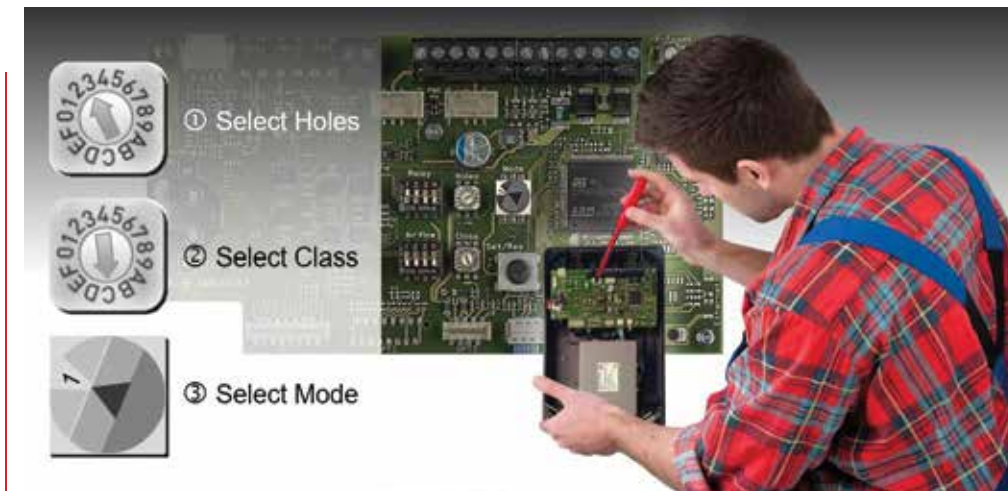
*Technical data*

Mains voltage:	14 to 30 V DC
Ambient temperature:	-10 °C to + 55 °C
Protection class:	IP 54
Dimensions (H x W x D):	195 x 290 x 140 mm
Case cover material:	ABS-Blend, UL 94-V0
Case Colour:	Grey
Weight:	1,95 kg
Standards:	AS 7240.20
Maximum sampling pipe length:	75 metres
Monitoring area:	720 m <sup>2</sup>
Application:	Single IT racks, small tele-communications containers, elevator shafts, clean rooms, false ceilings etc.



SEC-ASD-531	AS 7240.20		
	Class A	Class B	Class C
Max. overall length of the sampling pipe tube network	75 m	75 m	75 m
Max. length from ASD to farthest sampling hole	40 m	40 m	40 m
Max. number of sampling holes	6	8	12

**Simple 3 Step Set Up**



Main Units		ASD 531	ASD 532	ASD 535-1	ASD 535-3	ASD 535-2	ASD 535-4
Channels / Sensors	[Nbr]	1	1	1	1	2	2
Sensitivity	[%Obs./m]	0.006	0.002	0.002	0.002	0.002	0.002
Sampling Points	[A/B/C]	6/8/12	8/12/16	18/56/120	18/56/120	36/112/240	36/112/240
Aggr. Tube Length	[m]	75	120	300	300	600	600
Max. Area	[m <sup>2</sup> ]	720	1'280	2'880	2'880	5'760	5'760

## Aspirating Smoke Detector

- SEC-ASD-532** 1 Sampling pipe / Detector,  
1 Smoke level display



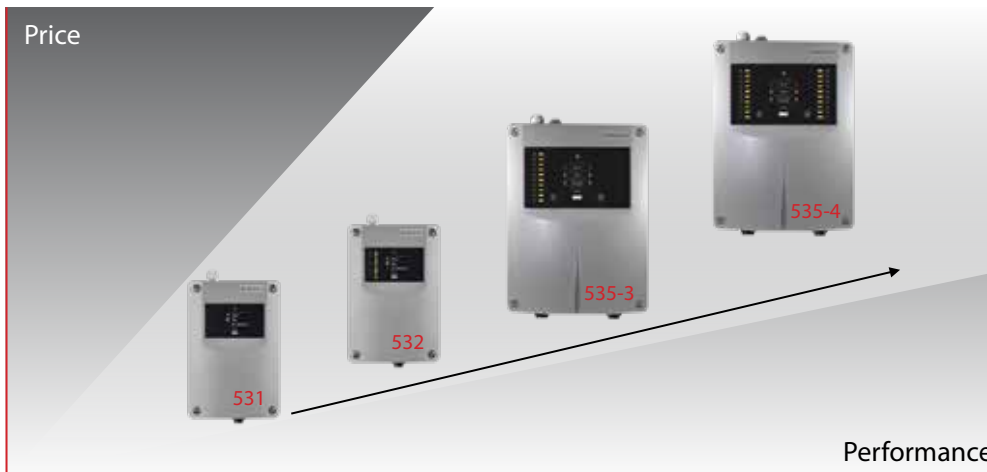
The SecuriRAS SEC-ASD-532 aspirating smoke detector is designed for small to midsize monitoring areas. The SEC-ASD-532 base unit is provided for a highly sensitive smoke sensor SSD 532 (to be ordered separately) for a single sampling pipe network. The measured smoke level is indicated on a bar graph display. The housing provides the option for two expansion modules. Commissioning and configuration is done either directly on the device or via the ASD Config software tool. For planning the ASD PipeFlow software allows an optimized design of any installation.

### Technical data

Mains voltage:	14 to 30 V DC
Ambient temperature:	-20 °C to + 60 °C
Protection class:	IP 54
Dimensions (H x W x D):	195 x 290 x 140 mm
Case cover material:	ABS-Blend, UL 94-V0
Case Colour:	Grey
Weight:	1,7 kg
Standards:	AS 7240.20
Maximum sampling pipe length:	120 metres
Monitoring area:	1280 m <sup>2</sup>
Application:	Elevator shafts, prison cells, clean rooms, laboratories, IT racks, tele-communications, facilities etc.

SEC-ASD-532	AS 7240.20		
	Class A	Class B	Class C
Max. overall length of the sampling pipe tube network	120 m	120 m	120 m
Max. length from ASD to farthest sampling hole	70 m	70 m	70 m
Max. number of sampling holes	8	12	16

## Covers all Price Points



## Extremely Silent







SEC-ASD-535-1



SEC-ASD-535-2



SEC-ASD-535-3



SEC-ASD-535-4

**Aspirating Smoke Detector**

- SEC-ASD-535-1 1 Sampling pipe / No Display / 1 Zone
- SEC-ASD-535-2 2 Sampling pipes / No Display / 2 Zones
- SEC-ASD-535-3 1 Sampling pipe / Display / 1 Zone
- SEC-ASD-535-4 2 Sampling pipes / Display / 2 Zones

The SecurIRAS SEC-ASD-535 aspirating smoke detector is designed for universal applications mainly for midsize to large monitoring areas. The SEC-ASD-535 base units provide space for 1 or 2 highly sensitive smoke sensors SEC-SSD-535 (to be ordered separately) for 1 or 2 sampling pipe networks. The measured smoke level can be indicated on a bar graph display (models -3 and -4). The housing provides the option for four expansion modules. Commissioning and configuration is done either directly on the device or via the ASD Config software tool. For planning the ASD PipeFlow software allows an optimized design of any installation.

*Technical data*

Mains voltage:	10.5 to 30V DC
Ambient temperature:	-30 °C to + 60 °C
Protection class:	IP 54
Dimensions (H x W x D):	397 x 265 x 148 mm
Case cover material:	ABS-Blend, UL 94-V0
Case Colour:	Grey
Weight:	3,85 kg
Standards:	AS 7240.20
VdS-Approval:	G 208154
Noise level:	32 dBA: extremely low noise levels
Maximum sampling pipe length:	2 x 300 metres
Monitoring area:	5760 m <sup>2</sup>
Application:	High-bay and deep-freeze warehouse, large data centres, historic buildings, large/high halls etc.

SEC-ASD-535	AS 7240.20		
	Class A	Class B	Class C
Max. overall length of the sampling pipe tube network	300 m	300 m	300 m
Max. length from ASD to farthest sampling hole	100 m	110 m	110 m
Max. number of sampling holes	18	56	120
Max. number of sampling holes per sampling branch	18	50	50



**Options & Expansions**



		CARDS			
	SIM 35	RS485 Network	n/a	optional	optional
	MCM 35	Memory Card	included	included	optional
	RIM 36	Relay I/F Module	optional	optional	optional (RIM 35)



### Smoke Sensor for SEC-ASD-531

#### SEC-SSD-31

Alarm Sensitivity range 0.02 – 10% /m  
The smoke sensor SSD 31 is pre-installed in the SEC-ASD-531 and is also available also as replacement part. 3 Pre-signals are set on a fixed percentage of the alarm threshold (30/50/70%).

#### Technical data

Sensitivity alarm:	0.02 %/m – 10 %/m
Sensitivity range pre-signals:	0.006 %/m – 7 %/m
Ambient temperature:	-10 °C to + 55 °C
Dimensions (H x W x D):	120 x 116 x 95 mm



### Smoke Sensor for SEC-ASD-532

#### SEC-SSD-535-3

Alarm Sensitivity range 0.02 – 10% /m  
The smoke sensor SSD 532 has to be ordered separately for the SEC-ASD-532.  
3 Pre-signals can be set between 10 and 90% of the alarm threshold.

#### Technical data

Sensitivity alarm:	0.02 %/m – 10 %/m
Sensitivity range pre-signals:	0.002 %/m – 9 %/m
Ambient temperature:	-20 °C to + 60 °C
Dimensions (H x W x D):	120 x 116 x 95 mm



### Smoke Sensor for SEC-ASD-535

#### SEC-SSD-535-3

Alarm Sensitivity range 0.02 – 10% /m  
The smoke sensor SSD 535 has to be ordered separately for the SEC-ASD-535.  
Pre-signals can be set between 10 and 90% of the alarm threshold.

#### Technical data

Sensitivity alarm:	0.02 %/m – 10 %/m
Sensitivity range pre-signals:	0.002 %/m – 9 %/m
Ambient temperature:	-30 °C to + 60 °C
Dimensions (H x W x D):	120 x 136 x 95 mm



### Fastener plate to cover a smoke sensor chamber

#### SEC-ASD-535 Verschl

The fastener plate is for closing the 2nd channel when it is temporarily not used. (e.g. Conversion of a room)  
The packaging unit of the fastener plate is 50 pieces.

## PVC FITTINGS



### Compressed-air connection

#### SEC-CC-25-PVC

Compressed-air connection for tube  
TU 25 PVC for cleaning the aspirating tube.

#### Technical data

Material:	PVC
Colour:	grey
Diameter:	25 mm



### Ventilation duct flange

#### SEC-DF-25-PVC

Flange for tube TU 25 PVC for the monitoring of ventilation ducts. Per duct 3 pieces of DF 25 PVC are required, 2 for the aspirating stub, 1 for the air recirculation.

#### Technical data

Material:	PVC
Colour:	grey
Diameter:	25 mm



### Relay I/F module for SEC-ASD-535

**SEC-RIM-35** 5 relays with changeover contacts  
The RIM 35 brings five (5) additional relay outputs to your SEC-ASD-535. Expansion limit is two (2) RIM 35 / 10 relays. Each relay can be assigned to any ASD event by programming with the ASD Config software. The module comes with mounting brackets, screws and ribbon cable.

#### Technical data

Max. relay output load:	50 / 1 / 30 V DC/A/W
Dimensions (H x W x D):	95x58x17 mm
Weight:	85 g



### Relay I/F module for SEC-ASD-531 and SEC-ASD-532

**SEC-RIM-36**  
The RIM 36 brings five (5) additional relay outputs to your Special Fire Detector (except SEC-ASD-535). Expansion limit is two (2) RIM 35 / 10 relays. Each relay can be assigned to any ASD event by programming with the SEC-ASD Config software. The module comes with mounting brackets, screws and ribbon cable.

#### Technical data

Max. relay output load:	50 / 1 / 30 V DC/A/W
Dimensions (H x W x D):	95x58x17 mm
Weight:	85 g



### Memory card module for SEC-ASD-535

**SEC-MCM-35**  
This Memory Card Module lets you trace up to 16 Million events and stores analogue values like smoke concentration and airflow of at least 83 days depending on the log interval. The module comes with mounting brackets, screws and ribbon cables and SD-Industrial memory card.

#### Technical data

Dimensions (H x W x D) :	95x58x17 mm
Weight:	43 g



### SD-Card Industrial 2GB

**SEC-SD-Industrial**  
SD memory card (industrial) 2GB to use with MCM 35 or directly on-board in SEC-ASD-531 (AMB 31) and SEC-ASD-532 (AMB 32).

#### Technical data

Memory:	2 GB
Temperature range:	- 40°C - + 85°C



### Serial I/F Module networking for SEC-ASD-532 and SEC-ASD-535

**SEC-SIM-35**  
For the RS 485 networking of up to 250 Special Fire Detectors like SEC-ASD-535 or SEC-ASD-532. Using the "ASD Config" configuration software, all SEC-ASDs in the network can be visualised and configured from a PC. The module comes with mounting brackets, screws and ribbon cables.

#### Technical data

Dimensions (H x W x D) :	95x58x17 mm
Weight:	56 g



### Serial Master Module for networking

**SEC-SMM-535**  
This interface connects the RS485 (over SIM 35) networked SEC-ASDs to a USB port of a PC. It is powered by the USB port.

#### Technical data

Power Supply:	USB powered / 5 VDC
Operating temperature:	-30°C to +60°C
Dimensions (H x W x D):	82x89x55 mm
Weight:	165 g

## SEC-ASD planning and calculation software

### SEC-ASD-PipeFlow

Planning and calculation software for planning symmetric and asymmetric sampling pipe topologies.  
(Subject to licence)

#### Technical data (requirements)

Operating voltage:	Windows XP / 7 / 8.1
RAM:	1 GB
Hard disc space required:	50 MB



## SEC-ASD configuration tool license with USB Dongle

SEC-D&PL\_ASD-Conf\_N Dongle & Partner License ASD Config Networking



## SEC-ASD configuration tool license with USB Dongle

SEC-D&PL\_ASD-Conf Dongle & Partner License ASD Config



## USB 2.0 cable for connection between SEC-ASD-535 and PC

### SEC-KAB-USB-45

USB 2.0 cable for connection between SEC-ASD-535 and PC for commissioning and maintenance via ASD Config

#### Technical data

Length:	4.5m
Type:	A-B

# SAMPLING POINTS



## Sampling hole clip

- SEC-CLIP X.X PA
- SEC-CLIP 2.0 PA
- SEC-CLIP 2.5 PA
- SEC-CLIP 3.0 PA
- SEC-CLIP 3.5 PA
- SEC-CLIP 4.0 PA
- SEC-CLIP 4.5 PA
- SEC-CLIP 5.0 PA
- SEC-CLIP 5.5 PA
- SEC-CLIP 6.0 PA
- SEC-CLIP 6.5 PA
- SEC-CLIP 7.0 PA

#### Technical data

Hole Diameter:	Type
2.0 mm	SEC-CLIP 2.0 PA
2.5 mm	SEC-CLIP 2.5 PA
3.0 mm	SEC-CLIP 3.0 PA
3.5 mm	SEC-CLIP 3.5 PA
4.0 mm	SEC-CLIP 4.0 PA
4.5 mm	SEC-CLIP 4.5 PA
5.0 mm	SEC-CLIP 5.0 PA
5.5 mm	SEC-CLIP 5.5 PA
6.0 mm	SEC-CLIP 6.0 PA
6.5 mm	SEC-CLIP 6.5 PA
7.0 mm	SEC-CLIP 7.0 PA

Sampling hole on aspirating pipe (clip).

Available with different diameter according to the project data.

Only for PVC and ABS pipes with 25 mm diameter. Packaging unit: 10 pieces



## Maintenance clip

### SEC-Clip-REV PA

Clip without hole for revision purpose.  
Packaging unit: 10 pieces

#### Technical data

Material:	PA
Pipe connection diameter:	25 mm



**Sampling point with heating**

- SEC-HEAT-3.0-PVC red
- SEC-HEAT-3.5-PVC blue
- SEC-HEAT-4.0-PVC green
- SEC-HEAT-4.5-PVC black
- SEC-HEAT-5.0-PVC brown

To install the aspirating pipe in deep-freeze rooms to prevent the freezing of the aspirating holes. HEAT X.X is the relevant diameter for SEC-ASD PipeFlow-calculations (3.0/3.5/4.0/4.5/5.0mm)

*Technical data*

Pipe connection diameter:	25 mm
Hole Diameter:	Type
5,7 mm	HEAT 3.0 ABS
6,1 mm	HEAT 3.5 ABS
6,3 mm	HEAT 4.0 ABS
6,7 mm	HEAT 4.5 ABS
7,1 mm	HEAT 5.0 ABS



**Sampling point with heating**

- SEC-HEAT-3.0-ABS red
- SEC-HEAT-3.5-ABS blue
- SEC-HEAT-4.0-ABS green
- SEC-HEAT-4.5-ABS black
- SEC-HEAT-5.0-ABS brown

Same as HEAT X.X PVC but in ABS.

*Technical data*

Pipe connection diameter:	25 mm
Hole Diameter:	Type
5,7 mm	HEAT 3.0 ABS
6,1 mm	HEAT 3.5 ABS
6,3 mm	HEAT 4.0 ABS
6,7 mm	HEAT 4.5 ABS
7,1 mm	HEAT 5.0 ABS



**Heat Resistor**

SEC-Heat-Resistor

Replacement for the sampling point with heating HEAT X.X PVC/ABS.

*Technical data*

Resistor:	220 Ω
-----------	-------



**Cable connection fitting**

- SEC-CCF-25-PVC
- SEC-CCF-25-ABS

Cable connection fitting set for T-junctions of the tubes in deep-freeze rooms.

*Technical data*

Pipe connection diameter:	25 mm
---------------------------	-------



**Silicon litz wire**

- SEC-SLW-0.5-wt (white)
- SEC-SLW-0.5-bk (black)

Silicon litz wire 0.5mm<sup>2</sup> to connect the heating resistors in the heating nozzles HEAT X.X PVC/ABS. Order quantity must be a multiple of 100.

*Technical data*

Length:	1 m
Packaging unit:	100 pieces



**Wiring connection unit**

SEC-WCU-535

For the introduction of the supply of the sampling point with heating into the aspirating tube, with internal clamps. For more details please see the guidelines for deep freeze-warehouses.

*Technical data*

Dimensions (H x W x D):	80 x 82 x 85 mm
Material:	PC
Pipe connection diameter:	25 mm
Weight:	317g



**NOTE:** A full range of ASD pipes and fitting are available.



### Manual ball valve

**SEC-MV-25-PVC**  
**SEC-MV-25-ABS**  
 Manual ball valve for revision and cleaning works with compressed air.

Technical data	
Material:	PVC
Pipe connection diameter:	25 mm



### Detector Box

**SEC-REK 511**  
 For the localization of a fire in a separate room, when a single SEC-ASD is monitoring several rooms. To use together with the SSD 515-Xs smoke detector. Has to be installed in every stub, which leads to a single room from the main tube.

Technical data	
Operating voltage:	18 to 28 VDC
Ambient temperature:	0 °C to + 50 °C
Dimensions (H x W x D):	186 x 122 x 85 mm



### Scattered light smoke detector for SEC-REK 511

**SEC-SSD-515-1S** sensitivity 1.2%/m  
**SEC-SSD-515-2S** sensitivity 0.6%/m  
**SEC-SSD-515-3S** sensitivity 0.3%/m

Technical data	
Operating voltage:	18 to 28 VDC
Ambient temperature:	-20 °C to + 60 °C
Protection class:	IP 44
Case colour:	white
Dimensions (D x H):	80 x 56 mm

The SSD 515-xS (Scattered Light Smoke Detector) is the smoke sensor for the accessory device SEC-REK 511 (full addressing) for the Aspirating Smoke Detector of the SEC-ASD and RAS product family. The SSD 515-xS operates according to the scattered light principle and is designed so that it optimally meets the specific requirements of smoke detection in association with an Aspirating Smoke Detector. The detector has alarm threshold tracking and is additionally available with various sensitivities. By choosing the appropriate detector sensitivity, application-specific detection properties of the Aspirating Smoke Detector are possible.



### Filter box small

**SEC-FBS-25-PC**  
 Filter box small including filter-mat.  
 Inserted into the sampling pipe before SEC-ASD. To be used in slightly dusty rooms.

Technical data	
Dimensions (H x W x D):	80 x 82 x 85 mm
Material:	PC
Pipe connection diameter:	25 mm



### Filter mat small for filter box small

**EC-FBS-25-PC-EFM-5er**  
 Filter-mat for filter box small.  
 Packaging of 5 pieces

Technical data	
Dimensions (H x W x D):	80 x 80 x 20 mm



### Filter box large

**SEC-FBL-25-PC**  
 Filter box large including filter-mat.  
 Inserted into the sampling pipe before SEC-ASD. To be used in dusty rooms

Technical data	
Dimensions (H x W x D):	120 x 122 x 85 mm
Material:	PC
Pipe connection diameter:	25 mm



### Filter mat large for filter box large

**SEC-FBL-25-PC-EFM-5er**  
 Replacement filter mat for the filter box large.  
 Packaging of 5 pieces

Technical data	
Dimensions (H x W x D):	117 x 80 x 80 mm



**Water retaining box**

**SEC-WRB-25-PVC**  
**SEC-WRB-25-ABS**  
 Water retaining box standard  
 Used in rooms with high humidity.  
 Inserted into the sampling pipe before  
 DTB 25 PC (when used), any types of dust filters  
 (when used) and SEC-ASD.

*Technical data*

Dimensions (H x W x D):	335 x 250 x 90 mm
Material:	PC
Pipe connection diameter:	25 mm



**Air cooler and water separator**

**SEC-LK-35-PVC**  
**SEC-LK-35-ABS**  
 Is used as an air cooler when the sampling pipe  
 is in a room >60°C. Can also be used as a water  
 separator in rooms with high amount of air  
 humidity and / or condensing water because of  
 temperature differences.  
 For more details see the technical documentation.

*Technical data*

Dimensions (H x W x D):	1000 x 730 x 80 mm
Material:	Copper pipe d=22x1 mm
Weight:	8 kg
VdS-Approval:	G208154
CPD-Approval:	0768-CPD-20600



**Detonation flame arrester**

**SEC-DFA-25-3**  
 Detonation flame arrester for explosion zones.  
 Equipment category IIC. 2 pieces are needed  
 per sampling tube. For more details see the  
 technical documentation.

*Technical data*

Pipe connection diameter:	25 mm
---------------------------	-------



**Detonation flame arrester**

**SEC-DFA-25-2**  
 Same as DFA 25-3 but equipment category IIB.

*Technical data*

Pipe connection diameter:	25 mm
---------------------------	-------



**Detonation flame arrester**

**SEC-DFA-25-1**  
 Same as DFA 25-3 but equipment category IIA.

*Technical data*

Pipe connection diameter:	25 mm
---------------------------	-------

**Noise reduction housing**



**SEC-Insulation-housing**  
 The noise insulation housing is used as an  
 accessory part for the aspirating smoke  
 detector ASD 535 in areas where a low level  
 of noise is required. If the ventilator noise from  
 the aspirating smoke detector is found to be  
 disruptive and changing the location of the  
 evaluation unit is not possible, the aspirating  
 smoke detector can be integrated into a noise  
 insulation housing.

*Technical data*

Sound Pressure level:	20 dB (A)
Dimensions (H x W x D):	500 x 500 x 300 mm
Material:	Steel sheet
Weight:	21.5kg
Protection Class:	IP 54



**Additional housing for SecuriRAS SEC-ASD-535**

**SEC-ASD-Housing-Ex**  
 The additional housing is designed for the  
 integration of an aspirating smoke detector  
 SEC-ASD-535. The additional housing should  
 be used as additional personal protection in  
 explosive areas. If there is danger of operations  
 related damage (e.g. lift truck operations) to the  
 aspirating smoke detector, the additional housing  
 can serve as a mechanical protection measure.

*Technical data*

Dimensions (H x W x D):	500 x 500 x 300 mm
Material:	Steel sheet
Weight:	21kg
Protection Class:	IP 54



### Main board for SEC-ASD-531

**SEC-AMB-31**

Repair exchange for the SEC-ASD-531

*Technical data*

Dimensions (H x W x D): 250 x 160 x 15 mm



### Main board for SEC-ASD-532

**SEC-AMB-32**

Repair exchange for the SEC-ASD-532

*Technical data*

Dimensions (H x W x D): 250 x 160 x 15 mm



### Main board for SEC-ASD-535-1 and -3

**SEC-AMB-35-1**

Repair exchange for the SEC-ASD-535-1 and -3

*Technical data*

Dimensions (H x W x D): 125 x 176 x 20 mm



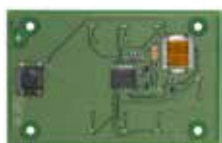
### Main board for SEC-ASD-535-2 and -4

**SEC-AMB-35-2**

Repair exchange for the SEC-ASD-535-2 and -4

*Technical data*

Dimensions (H x W x D): 125 x 176 x 20 mm



### Basic control board for standard display of SEC-ASD-535-1 and -2

**SEC-BCB-35**

Repair exchange for the standard display unit (without smoke level display)

*Technical data*

Dimensions (H x W x D): 90 x 59 x 9 mm



### Basic control board for advanced display of SEC-ASD-535-3 and -4

**SEC-ACB-35**

Repair exchange for the advance display unit (with smoke level display)

*Technical data*

Dimensions (H x W x D): 90 x 142 x 9 mm



### Air flow sensor for SEC-ASD-531 and SEC-ASD-532

**SEC-AFS-32**

Repair exchange for air flow sensor for SEC-ASD-531 / 532 incl. connection wire.



### Air flow sensor for SEC-ASD-535

**SEC-AFS-35**

Repair exchange for air flow sensor for SEC-ASD-535 incl. connection wire.

*Technical data*

Dimensions (H x W x D): 15 x 14 x 115 mm



### Aspirating fan unit for SEC-ASD-531 and SEC-ASD-532

**SEC-AFU-32**

Repair exchange for the aspirating fan unit complete for SEC-ASD-531 / 532.



### Aspirating fan unit for SEC-ASD-535

**SEC-AFU-35**

Repair exchange for the aspirating fan unit complete for SEC-ASD-535.

*Technical data*

Dimensions (H x W x D): 138 x 185 x 58 mm



### Rotary Snap Lock for SEC-ASD-531/532/535

**SEC-RSL-35**

Repair exchange for the SEC-ASD-531/532/535 housing.

*Technical data*

Material: ABS / steel

Packaging unit: 4 pieces



### Insect protection screen for SEC-ASD-531/532/535

**SEC-IPS-35**

Insect protection screen for the SEC-ASD-531/532/535 housing.

*Technical data*

Material: steel

Packaging unit: 2 pieces

## **Sydney**

Block Y, Unit 1, 391 Park Road, REGENTS PARK NSW 2143  
Mail: PO Box 508 GYMEA NSW 2227  
Phone: 1300 INCITE (1300 462 483) | 02 9644 7144  
Fax: 02 9644 7255  
Email: [sales@incitefire.com.au](mailto:sales@incitefire.com.au)  
Technical support: [support@incitefire.com.au](mailto:support@incitefire.com.au)

## **Melbourne**

Address: Unit 120, 45 Gilby Road, MT WAVERLEY VIC 3149  
Phone: 03 9544 2211  
Fax: 03 9544 2212  
Email: [salesvic@incitefire.com.au](mailto:salesvic@incitefire.com.au)

## **Brisbane**

Address: 25 Jeays Street, BOWEN HILLS QLD 4006  
Phone: 07 3252 5366  
Fax: 07 3252 4099  
Email: [salesqld@incitefire.com.au](mailto:salesqld@incitefire.com.au)

## **Perth**

Address: Unit 2, 48 Irvine Drive, MALAGA WA 6090  
Phone: 08 9349 2972  
Email: [saleswa@incitefire.com.au](mailto:saleswa@incitefire.com.au)